

ProBin™ 16 & 24 Series



24-S The ProBin 24-S is produced with the latest high-pressure injection molding technology, so it's durable, lightweight, and easy to handle.

The ProBin 16 and 24 Series is ideal for material handling and food processing applications. The smooth, nonporous surfaces are easy to clean and won't trap debris. The potential for cross contamination is reduced. Available in multiple colors, the 24-S can be used for sorting and identifying materials.



16-S The ProBin 16-S is shallower in depth and can be stacked up to 9 high in cold storage.*

Feature Highlights

- **FDA-approved materials** are certified safe for use with food products, eliminating many HACCP problems associated with wood bins.
- **Splinter-resistant plastic** delivers reduced maintenance costs, fewer injuries to workers, and less damage to product. Bin repair is inexpensive with hot air welding.
- **Nonporous surfaces** won't absorb water or dehydrate your product like wood bins, and they provide a constant tare weight throughout their use.
- **Rounded corners and smooth surfaces** mean fewer scuffs, abrasions, and cuts on your product. Risk of contamination is reduced because there are fewer places for unwanted particles to hide.
- **Easy-to-sanitize** ProBins keep cleaning costs to a minimum. A high-pressure wash removes most debris; a nonabrasive brush can dislodge any remaining items.
- **Lightweight construction** reduces shipping costs and makes ProBins easier to move; their interlocking foot design makes them safer to stack — up to 9 high.*
- **Secure-fitting MacroLids®** provide additional coverage and further reduce the risk of contamination from foreign particles.

*See reverse for maximum stack weight specifications.



MACROPLASTICS™
Inventing Fresh Ideas.

800.845.6555 www.macroplastics.com

Benefits of Using ProBins

Increased productivity.



Lightweight ProBins are easy to handle, move, and transport. The unique interlocking foot design makes them easy to align and stack.

Multiple storage options.



The 24-S is available in blue, gray, and green, in addition to the standard ivory color to provide multiple options for sorting and identifying materials easily.

Reduced bin repair costs.



ProBins are virtually maintenance free; repairs are easy with hot air welding.

Better sanitation and reduced contamination.



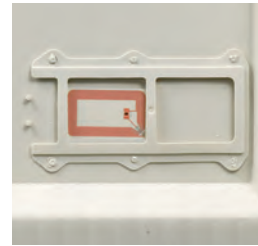
Smooth, nonporous surfaces are easy to sanitize and won't trap debris, breed bacteria, or absorb chemicals like wood bins.

Improved pack out.



Rounded corners and smooth surfaces mean fewer scuffs, abrasions, and cuts on your product.

Improved traceability and bin security.



Several identification methods including RFID tags and attractive foil embossing are available.

Specifications for the ProBin 24-S

Load Capacity:	1,200 pounds
Volume Capacity:	40,700 cubic inches / 176 gallons
Tare Weight:	92.5 pounds
Maximum Stack Weight ¹ :	8,500 pounds (long term, ambient temperature) 10,000 pounds [short term (<1 month), ambient temperature] 11,500 pounds [long term, cold storage (0° F to 35° F) ²]
Molding Process:	High-pressure injection molding
Material:	Polypropylene, U.V. stabilized
Approval:	FDA-regulated material
Container Design:	Double wall corner and center posts
Foot Design:	Two full-length feet with positive interlocking feature
Fork Lift Entry:	Two-way: 4 1/4" opening with patented integral slide-entry
External Dimensions:	47 1/8" (L) x 47 1/8" (W) x 28 1/8" (H)
Internal Dimensions:	44" (L) x 44" (W) x 22 1/4" (H)
Options:	Customer identification with RFID tags or foil embossing MacroLid Rotator Bar Center foot for added floor support Multiple colors: ivory, blue, green, or gray (24-S only)

Specifications for the ProBin 16-S

Similar to 24-S except:	
Volume Capacity:	27,700 cubic inches / 120 gallons
Tare Weight:	81 pounds
External Dimensions:	47 1/8" (L) x 47 1/8" (W) x 21 1/2" (H)
Internal Dimensions:	43 3/4" (L) x 43 3/4" (W) x 15 5/8" (H)

Notes: Dimensions assume tolerance of 1/4". Volume capacities assume tolerance of 5% and tare weights assume a tolerance of 4% unless noted otherwise. Ambient temperature approximately equal to 75° F. Data is subject to change.

¹ Stack Weight = (weight of bin contents + tare weight of bin) X number of bins in stack

² Please contact Macro Plastics if storage temperature is below 0° F.

Please refer to the appropriate User Guide for information on the safe transportation, stacking and handling of Macro Plastics products. The User Guides in PDF format are available online at www.macroplastics.com or call us at 1-800-845-6555.



MACROPLASTICS™
Inventing Fresh Ideas.

800.845.6555 | info@macroplastics.com
www.macroplastics.com